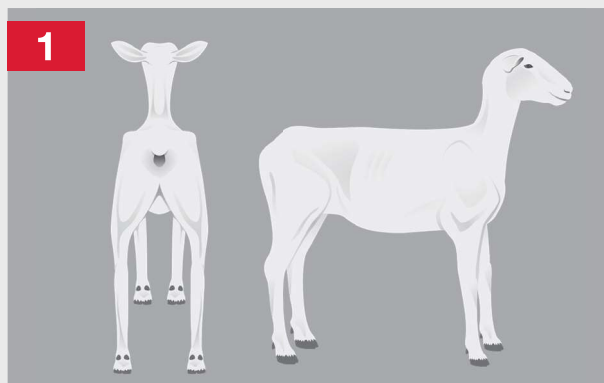


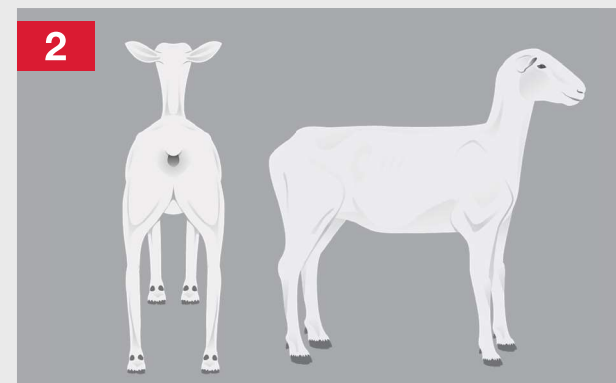


BODY CONDITION SCORING FOR SHEEP

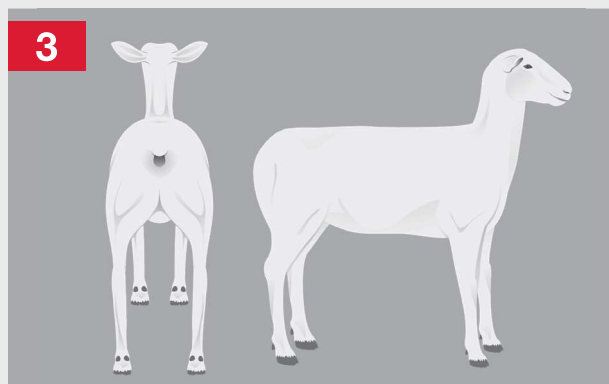
Body condition is an indication of a sheep's energy reserves and can impact health, reproduction and other production parameters. Periodically scoring body condition can help you evaluate the nutritional needs of your flock. Body condition scoring is a combination of visual and hands-on evaluation. Score in half-point increments – an ideal score for sheep falls in the range of 2.5 to 4.0, depending on life stage. During the breeding season, an ideal score is between 2.5 and 3.0.



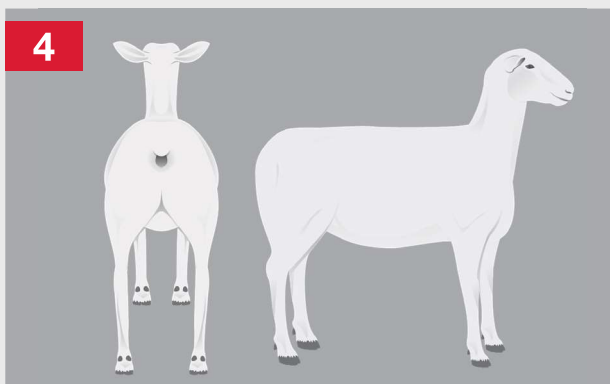
SCORE ONE: Extremely thin or starved appearance. Rib bones are visible. Vertebrae and hip bones are prominent and sharp. No fat cover is visible.



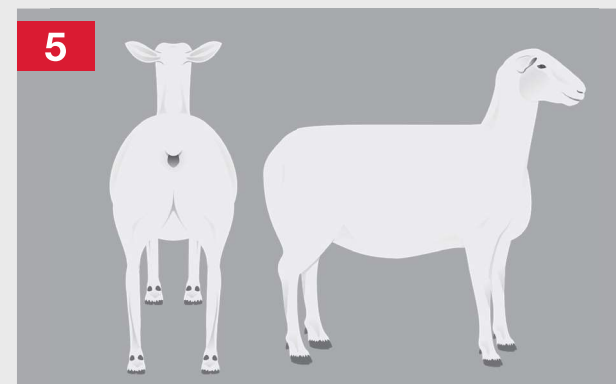
SCORE TWO: Thin appearance with only a few back ribs visible. Vertebrae and hip bones are less prominent. Minimal fat cover is visible.



SCORE THREE: Fairly smooth appearance with minimal visible ribbing. Vertebrae and hip bones are covered with little prominence.



SCORE FOUR: Smooth and completely covered appearance with ribs and vertebrae completely covered.



SCORE FIVE: Obese appearance. Rib cage covered with extra fat. Fleshiness is visible in the brisket area and in front of the shoulders.

Contact your local Purina representative to develop a nutrition program for your flock that supports optimal body condition scores.



FEED GREATNESS®